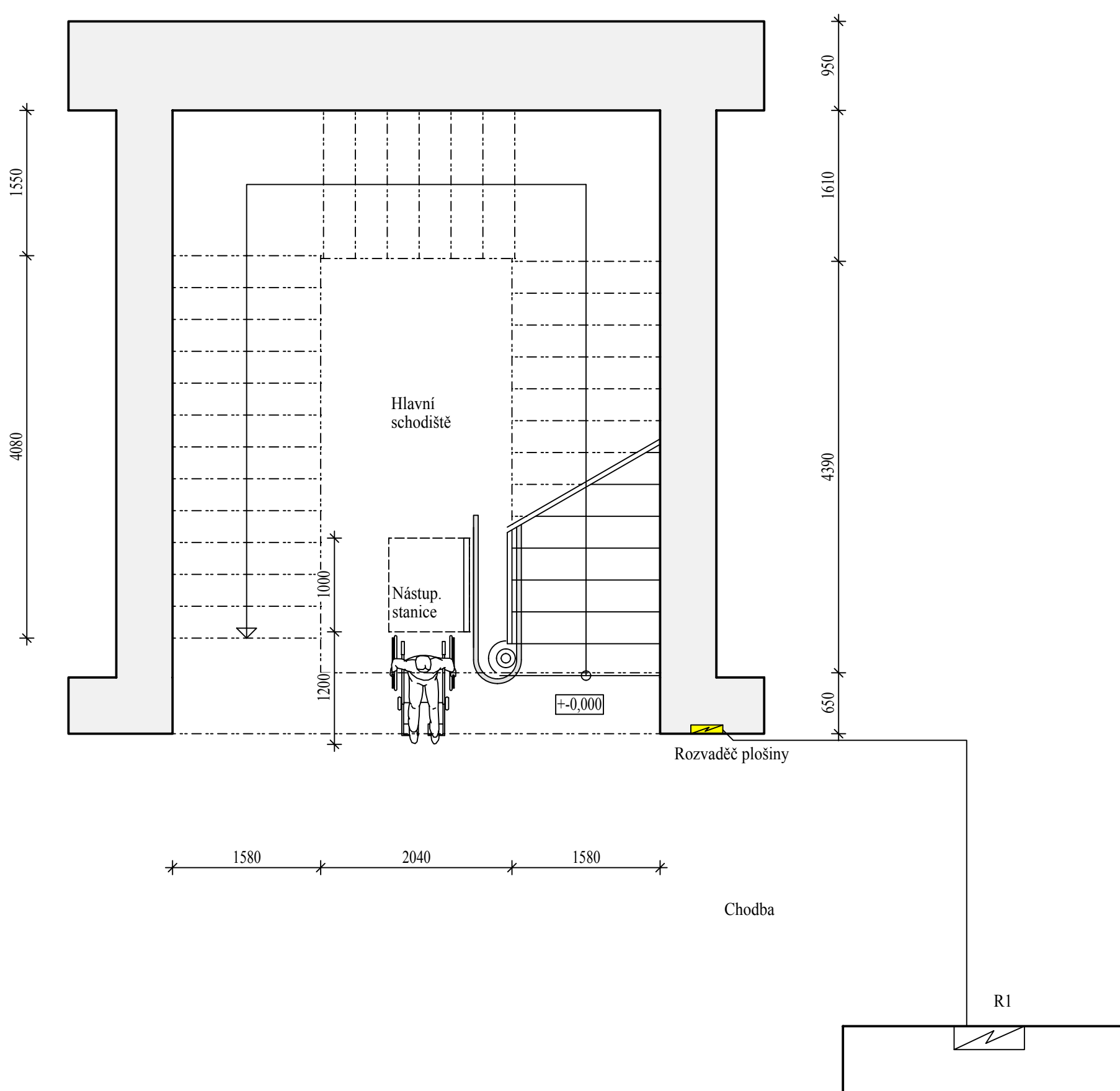
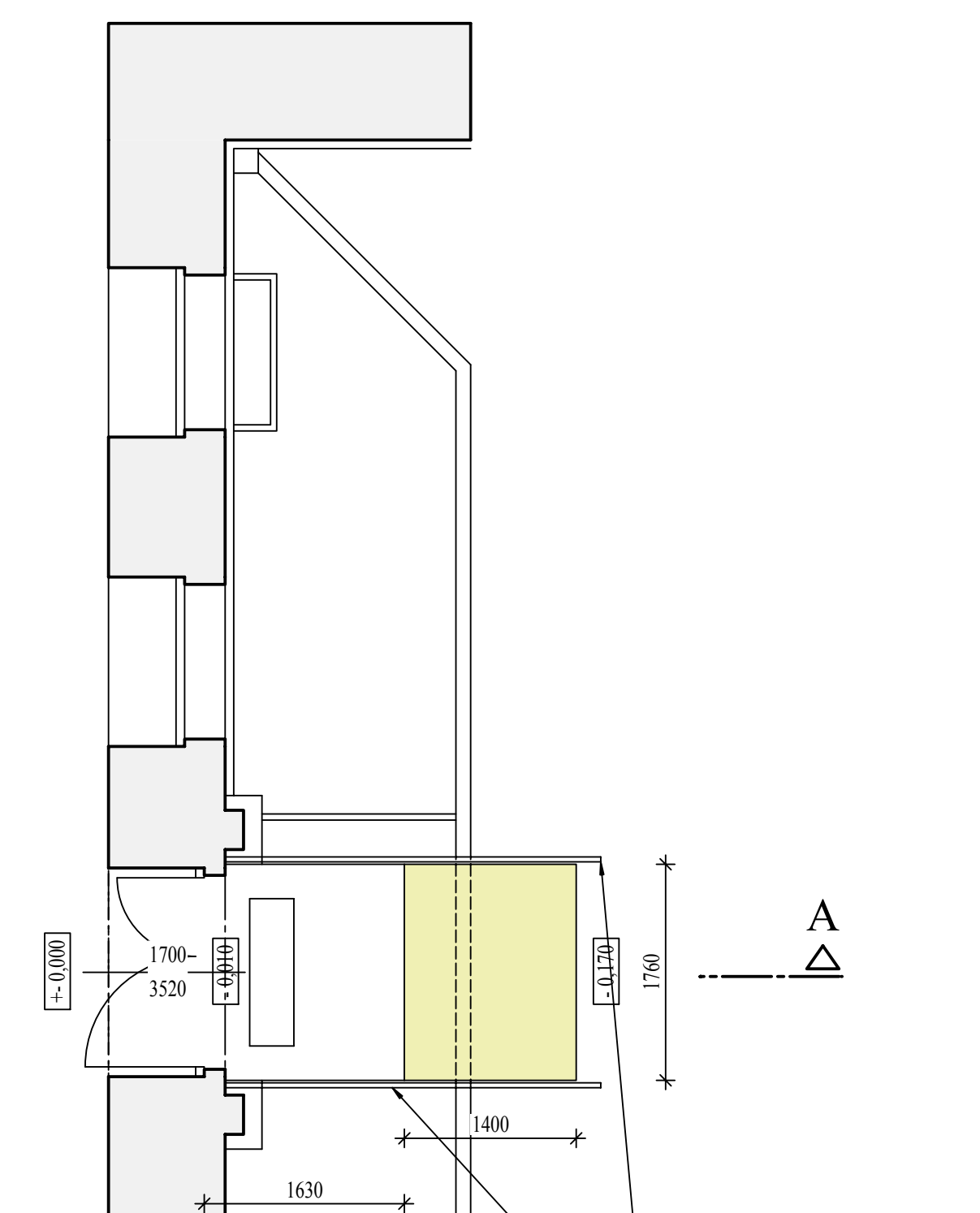
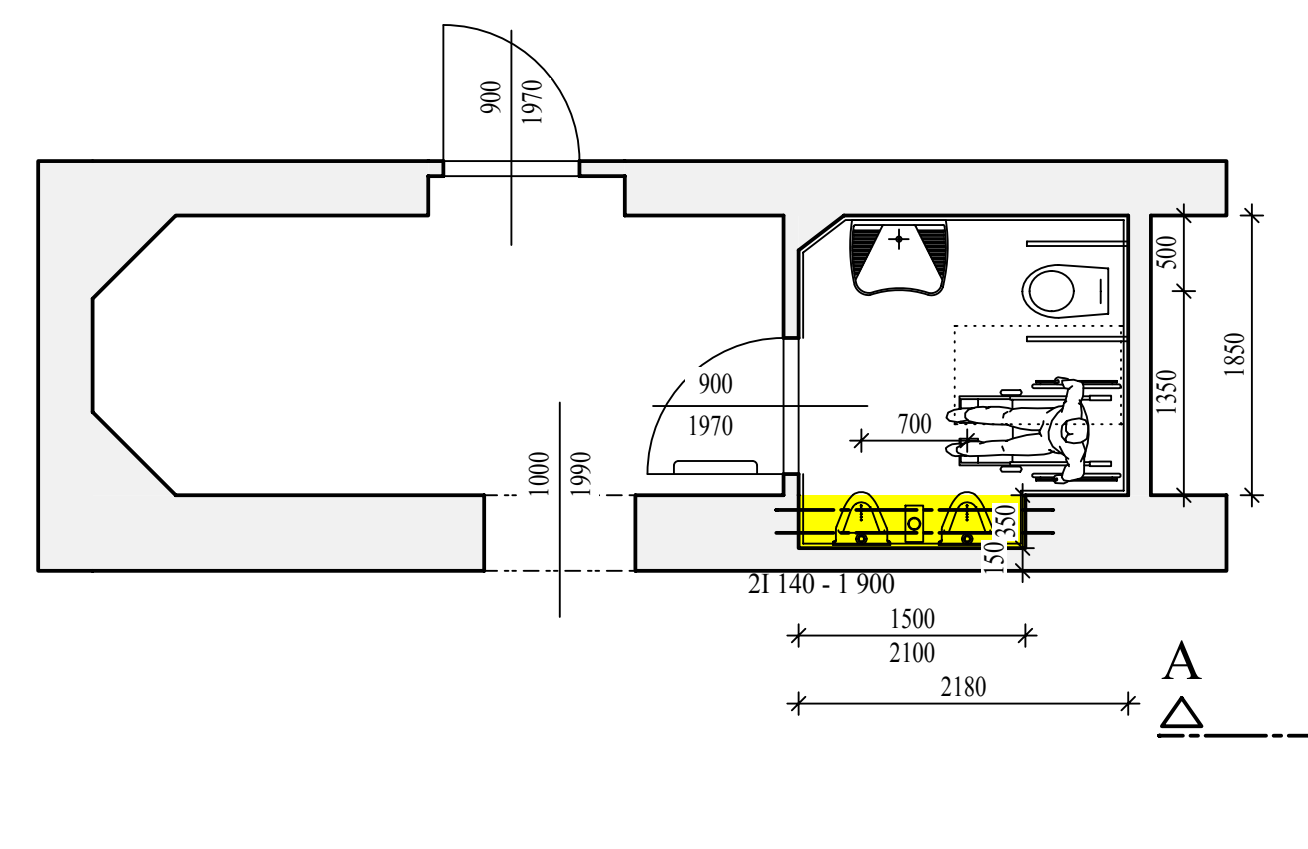


Přidorys v 1. NP

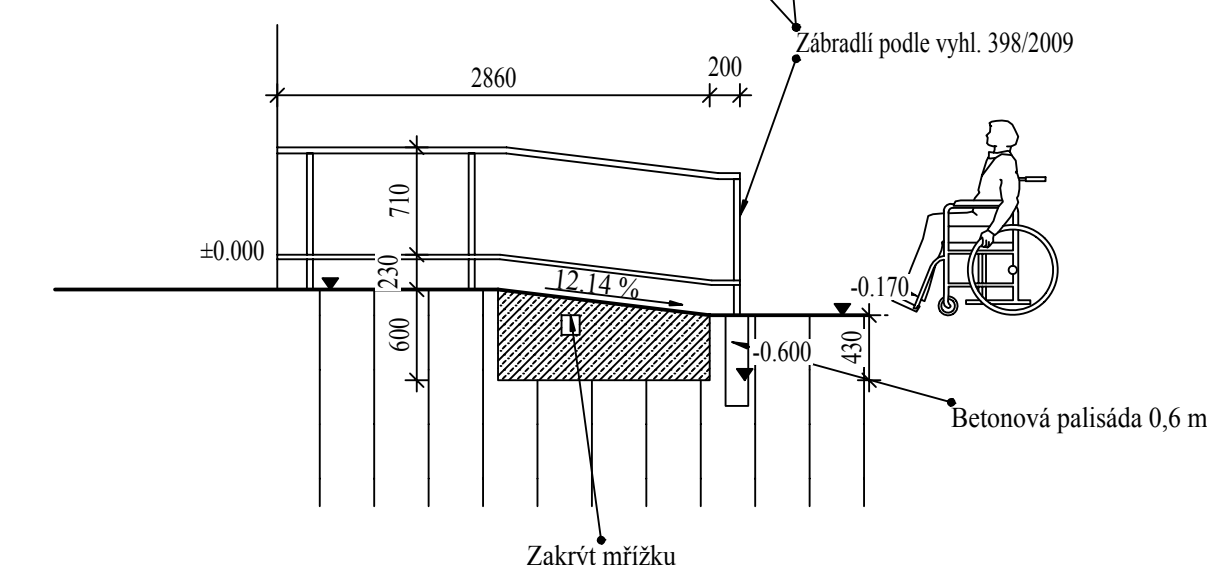


This architectural drawing shows a detailed floor plan of a staircase area. The main feature is a large rectangular space labeled "Hlavní schodiště". To its left is a smaller section labeled "Možnost sklopit", which includes a curved arrow indicating a foldable element. Below this section, a horizontal dimension line indicates a width of 576 units. At the bottom center, there is an entrance point labeled "Výstup. stanice" with a small icon of a person walking. A dashed line extends from this point towards the bottom left corner. At the bottom right, another horizontal dimension line indicates a width of 1200 units. The entire plan is overlaid on a grid. Dotted lines indicate various boundaries and potential structural elements.

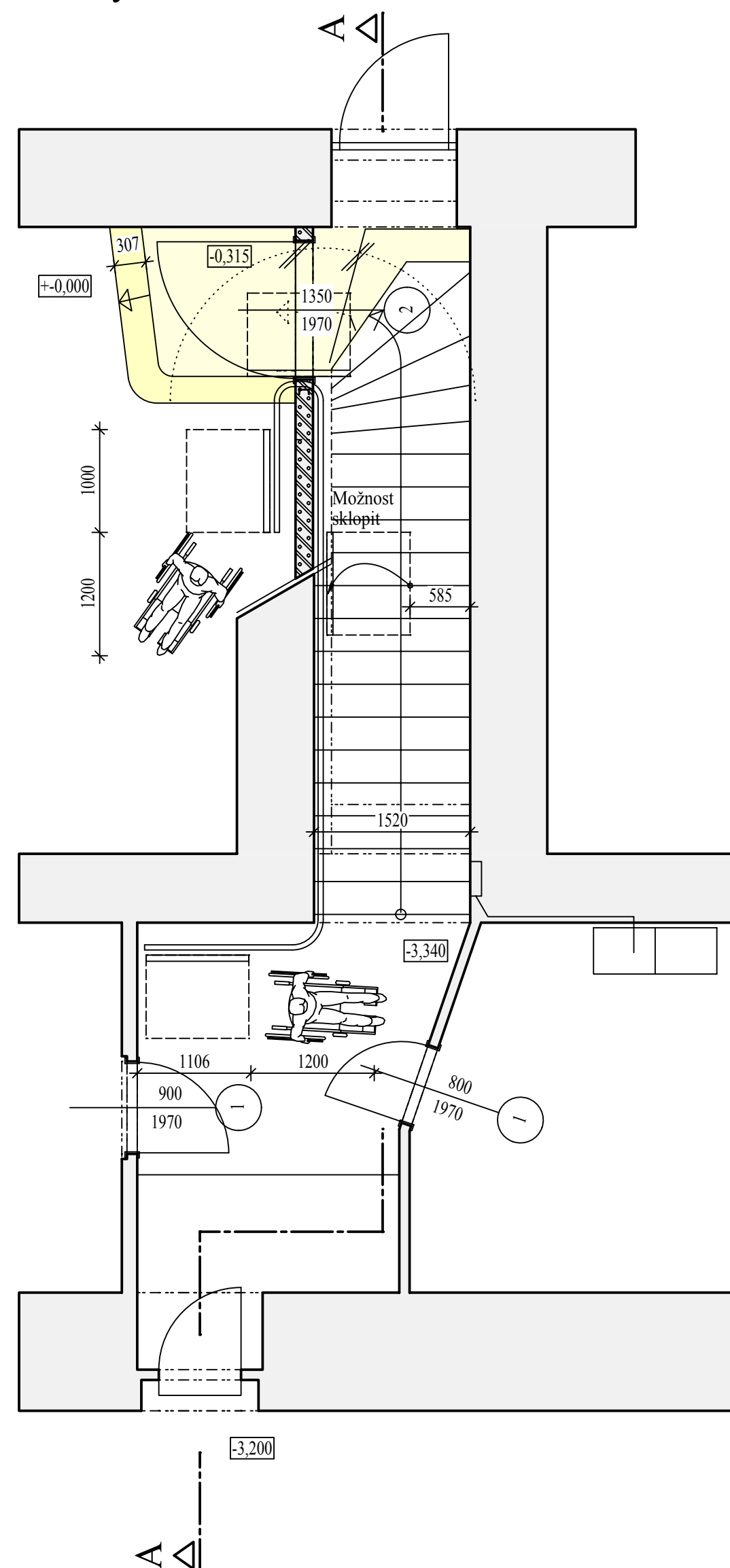
Pudorys



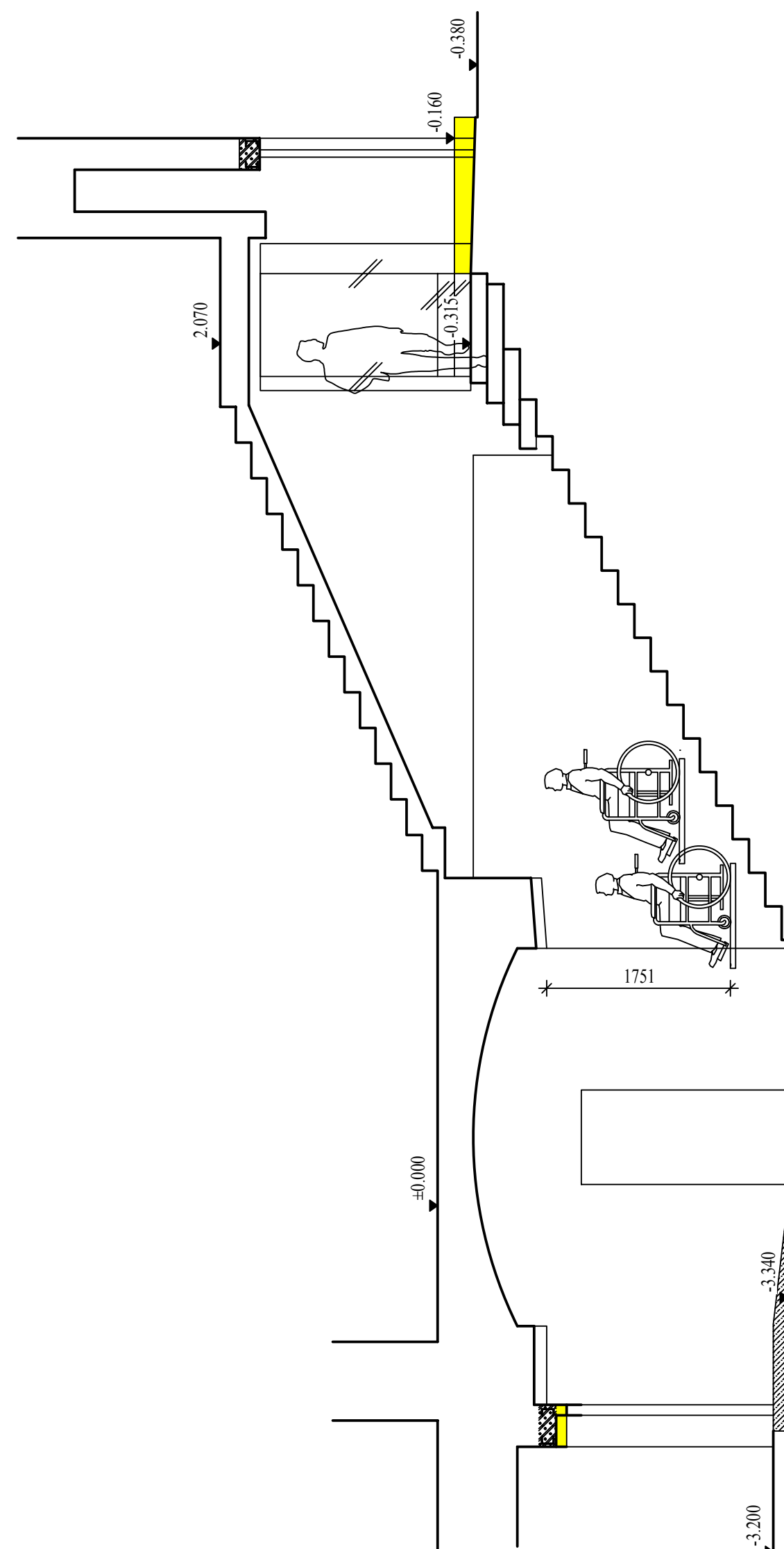
Řez A-A



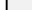
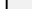
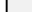
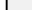
Pudorys



Řez A-A



LEGENDA

	STÁVAJÍCÍ ZDIVO
	BOURÁNÍ, DEMONTÁŽ
	DOZDÍVKY
	BETON C 20/25